

The First Sunday After Christmas



# First Presbyterian Church Arlington

1200 South Collins St.  
Arlington, TX 76010

The people gather for the Worship of God  
**Sunday, December 28, 2025**

Preaching: Rev. Chris Campbell  
Lay Leader: Anna Njei  
Organist: Shina Heo

## Mission Statement:

First Presbyterian Church of Arlington is transforming life by glorifying God,  
following Jesus, and loving our neighbor.

## About our service

Please silence all phones and devices.

Please fill out the Friendship Pad in your row.

Words in **bold** are spoken by the congregation.

§ Invites all to stand in body or spirit

Our communion grape juice is alcohol-free. Communion is open to all.

FPCA follows the liturgical calendar. Currently we are in the season of Christmas. We use gold paraments as a symbol of joy, glory, and light.

If you are a guest today, please stop by the narthex for information and a warm FPCA welcome!

## Gathering

Prelude From the Bottom of My Heart Sigfrid Karg-Elert

The Light of Christ

Prayer for Preparation

*Exalted God, even as the heavenly host sang of your glory in the night skies over Bethlehem; even as the star shone in the heavens, and sheep and cattle gathered in that light, so we gather, young and old together, to recount all that you have done for us in mercy and steadfast love. With all creation, we praise you and exalt your name forever and ever. Amen.*

Welcome and Opening Prayer Rev. Chris Campbell

Call to Worship

In this Christmas season of great joy, we praise the Lord;  
**for in mercy and abundant steadfast love, God has become our Savior.**  
Even in times of danger and threat, we praise God, who has set us free from fear and death through Jesus Christ, the pioneer of our salvation.  
**With all creation, in the midst of the congregation, we praise and put our trust in God alone.**

§ Hymn 143 Angels, from the Realms of Glory REGENT SQUARE

§ Prayer of Confession

**Merciful God, in great love you have claimed us as your children.**  
**We confess that we have not loved you as we should.**  
**We have not participated fully in your purposes and plans.**  
**We grow weary and give up when the way is hard.**  
**We have not loved our brothers and sisters as you intend.**  
**Forgive us, especially when we fail to protect children so vulnerable and precious in your sight.**  
**Forgive our misuse of power against people and against your creation.**  
**Help us to praise you by living in harmony and peace.**  
**Do not be ashamed of us, we pray, but strengthen us in our time of testing.**  
**Set us free from fear that we may wholly trust in you.**  
**We pray in the name of Jesus Christ, who shared our flesh and blood.**  
**Amen.**

§ Assurance of Pardon

Friends, believe the good news of the Gospel! **In Jesus Christ, we are forgiven!**

§ Gloria Patri

MEINEKE

**Glory be to the Father, and to the Son, and to the Holy Ghost.**  
**As it was in the beginning, is now, and ever shall be, world without end. Amen.**

## Proclaiming

Old Testament Reading

Psalm 148

Old Testament page 582

Children's Time

Children, age 3 to fourth grade, are invited to go to Kids For Christ (KFC).

§ Hymn 121

O Little Town of Bethlehem

St. Louis

Anthem

What Sweeter Music

Ralph Vaughan Williams

Elizabeth English, Soprano Emily Ledesma, Mezzo Soprano

*What sweeter music can we bring  
Than a carol, for to sing  
The birth of this, our heavenly King?  
We see him come, and know him ours,  
Who with his sunshine and his showers  
Turns all the patient ground to flowers.  
So we will give him, and bequeath  
This holly and this ivy wreath,  
To do him honor who's our king,  
and Lord of all this reveling.  
Dark and dull night, fly hence away,  
And give the honor to this day,  
That sees December turned to May.  
The darling of the world is come,  
and fit it is we find a room to welcome him.  
The nobler part of all the house here is the heart:  
Awake the voice! Awake the string!  
What sweeter music can we bring  
To sing the birth of this, our heavenly king?*

New Testament Reading

Revelation 11:15b, 19:6b, 16b

New Testament page 252

Sermon

Adoration: Hallelujah

Rev. Campbell

## Responding

§ Hymn 147

The First Nowell

THE FIRST NOWELL

Pastoral Prayer and the Lord's Prayer

**Our Father, who art in heaven, hallowed be thy name, thy kingdom come, thy will be done, on earth as it is in heaven. Give us this day our daily bread; and forgive us our debts, as we forgive our debtors; and lead us not into temptation, but deliver us from evil. For thine is the kingdom, and the power, and the glory, forever. Amen.**

Offering our Tithes, Gifts, and Lives

Offertory

Greensleeves

James Biery

§ Doxology

LASST UNS ERFREUEN

**Praise God from whom all blessings flow; praise Him, all creatures here below.  
Praise Him above ye heavenly host; praise Father, Son, and Holy Ghost. Amen!**

## Sending

§ Affirmation of Faith

from the Heidelberg Catechism

Question 36

What benefit do you receive from the holy conception and birth of Christ?

**That he is our Mediator, and that, in God's sight, he covers over with his innocence and perfect holiness the sinfulness in which I have been conceived. Amen.**

§ Hymn 136

Go, Tell It on the Mountain

GO TELL IT

§ Charge and Benediction

Postlude

O Come, All Ye Faithful

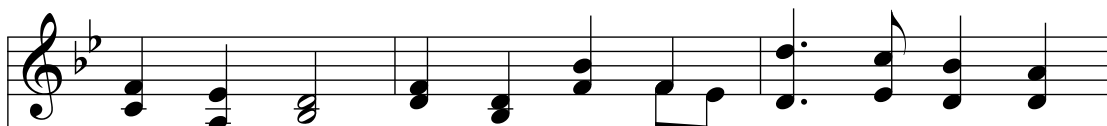
Mary McDonald



# 143 Angels, from the Realms of Glory



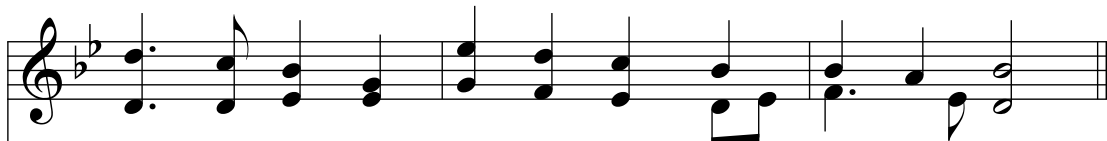
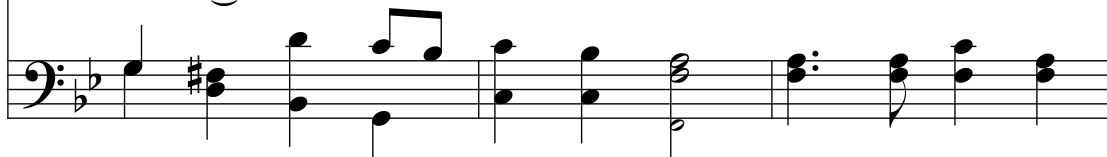
1 An - gels, from the realms of glo - ry, wing your flight o'er  
2 Shep - herds, in the fields a - bid - ing, watch - ing o'er your  
3 Sag - es, leave your con - tem - pla - tions; bright - er vi - sions  
4 All cre - a - tion, join in prais - ing God the Fa - ther,



all the earth; you, who sang cre - a - tion's sto - ry,  
flocks by night, God with us is now re - sid - ing;  
beam a - far; seek the great de - sire of na - tions;  
Spir - it, Son, ev - er - more your voic - es rais - ing



now pro - claim Mes - si - ah's birth:  
yon - der shines the in - fant light: come and wor - ship,  
you have seen his na - tal star:  
to the e - ter - nal Three in One:



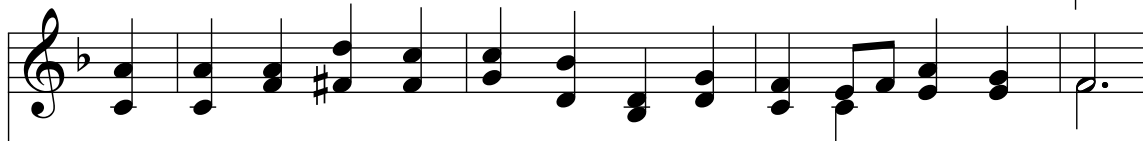
come and wor - ship, wor - ship Christ, the new - born king!



# 121 O Little Town of Bethlehem



1 O lit - tle town of Beth - le - hem, how still we see thee lie!  
 2 For Christ is born of Mar - y and, gath - ered all a - bove,  
 3 How si - lent - ly, how si - lent - ly, the won - drous gift is given!  
 4 O ho - ly child of Beth - le - hem, de - scend to us, we pray;



A - bove thy deep and dream - less sleep the si - lent stars go by.  
 while mor - tals sleep, the an - gels keep their watch of won - dering love.  
 So God im - parts to hu - man hearts the bless - ings of his heaven.  
 cast out our sin and en - ter in; be born in us to - day.



Yet in thy dark streets shin - eth the ev - er - last - ing light;  
 O morn - ing stars, to - geth - er pro - claim the ho - ly birth,  
 No ear may hear his com - ing, but in this world of sin,  
 We hear the Christ - mas an - gels the great glad ti - dings tell;



the hopes and fears of all the years are met in thee to - night.  
 and prais - es sing to God the king, and peace to all on earth.  
 where meek souls will re - ceive him, still the dear Christ en - ters in.  
 O come to us; a - bide with us, our Lord Em - man - u - el!



## The First Nowell

1 The first Now-ell the an-gel did say was to cer-tain poor  
 2 They look - ed up and saw a star shin-ing in the  
 3 And by the light of that same star three wise men  
 4 This star drew nigh to the north-west; o'er Beth - le -

shep-herds in fields as they lay, in fields where they lay keep-ing  
 east be-yond them far; and to the earth it gave  
 came from coun - try far; to seek for a king was their  
 hem it took its rest, and there it did both stop

their sheep, on a cold win-ter's night that was so deep.  
 great light, and so it con - tin - ued both day and night.  
 in - tent, and to fol - low the star wher-ev - er it went.  
 and stay, right o - ver the place where Je - sus lay.

*Refrain*

Now - ell, Now - ell, Now - ell, Now - ell,

The image shows a musical score for the phrase "born is the King of Is - ra - el." It consists of two staves: a treble clef staff on top and a bass clef staff on the bottom. The key signature is two sharps (F# and C#). The melody is written in the treble staff, starting with a quarter note G4, followed by quarter notes A4 and B4, then a half note C5, and finally a quarter note B4. The bass line is written in the bass staff, starting with a quarter note G2, followed by quarter notes A2 and B2, then a half note C3, and finally a quarter note B2. The lyrics "born is the King of Is - ra - el." are written below the treble staff, with hyphens under "Is" and "ra" to indicate syllables.

- 5 Then entered in those wise men three, 6 Then let us all with one accord  
full reverently upon their knee, sing praises to our heavenly Lord,  
and offered there in his presence that hath made heaven and earth of nought,  
their gold, and myrrh, and and with his blood our life hath bought.  
frankincense. *Refrain*

# 136 Go, Tell It on the Mountain

Refrain  $\text{♪} = \text{♪}^3 \text{♪}$

Go, tell it on the moun-tain, o-ver the hills and ev - ery - where;

go, tell it on the moun - tain that Je - sus Christ is born!

*Fine*

1 While shep-herds kept their watch-ing o'er si - lent flocks by night,  
2 The shep-herds feared and trem-bled when lo! a - bove the earth  
3 Down in a low - ly man - ger the hum - ble Christ was born,

be - hold, through-out the heav-ens there shone a ho - ly light.  
rang out the an - gel cho - rus that hailed our Sav - ior's birth.  
and God sent us sal - va - tion that bless - ed Christ-mas morn.

*to Refrain*

## This week:

**Sunday, Dec. 28**

- Sunday School - 9:45 a.m. in classrooms
- Worship Service - 11 a.m. in the Sanctuary

**Monday, Dec. 29 through Friday, Jan. 2**

- Church offices closed

## Coming up:

**Tuesday, Jan. 6**

- Senior Flexibility Class - 9:30 a.m. in Fellowship Hall
- Tuesday Morning Bible Study - 10:30 a.m. in Fellowship Hall

**Thursday, Jan. 8**

- Team meetings - Fellowship Team at 4:30 p.m. in room 210; other teams at 7 p.m. online

**Sunday, Jan. 11**

- Children's and Youth Music Ministries resume lunch and meetings

**Saturday, Jan. 17**

- Women's Ministry "New Year, New Beginnings" workshop - 10 a.m. in the Parlor

**Thursday, Jan. 22**

- Saints Alive - 11:30 a.m. in Fellowship Hall
- Session Meeting - 7 p.m. in the Parlor

**Sunday, Feb. 1**

- Souper Bowl of Sharing/Caring at noon in Fellowship Hall

## Community:

### December Special Offering for Christmas Joy

Special offering envelopes can be found in the narthex or you can designate on a blank envelope or on the memo line of your check which offering you are supporting. A Presbyterian tradition for over 70 years, the Christmas Joy Offering is designated by the General Assembly of the Presbyterian Church to provide congregations a direct way of supporting causes that help those in need. Joy Offerings are distributed equally to the Board of Pensions for assistance programs and to the National Ministries of the General Assembly Council to support Presbyterian racial ethnic education.



### New Year, New Beginnings

The Women's Ministry Team invites you to help us launch 2026 with our "New Year, New Beginnings" event Saturday, Jan. 17 at 10 a.m. in the Parlor. We'll enjoy brunch and teaching from a treasured guest speaker, Martita Lynch, as we seek to learn about the discipline of service. Since a new year brings 365 opportunities to develop new habits, let's walk this journey together. Bring a friend. We look forward to seeing you there! Registration is \$15. Go to [firstprestexas.org](http://firstprestexas.org) and click on the Ministries tab.

Get   
connected:



First Presbyterian  
Church Arlington



First Presbyterian  
Church Arlington



@fpcatx



[firstprestexas.org](http://firstprestexas.org)

# Prayer Ministry:

Send prayer requests to [prayer@firstprestexas.org](mailto:prayer@firstprestexas.org)

## Prayers for those with health and other concerns:

Charles Arnold, Carol Browning, Judy Crowell, Cyprain Engwenyi, Betty Farrell, Ken Floyd, Bobbie Fowler, Ivone Franzolin, Jay and Susan Graham, Nancy Guerry, Elaine Keefer, Bob and Beverly Koch, Lisa Landolt, Margaret Landolt, Pat May and her son Tim Karnes, Audrey Paska, Richard Price, Judy Reck, Debbie Richardson, Lisa Scrabeck, Tonya Scrabeck, David Spencer, Drew Stephenson, Susie Thurston, Donna Vickers, Nancy Welborne, Patrick Welborne, Sherry and Shelby Wolfe, Danny Womble

## Prayers for family in the armed forces:

Jeff Grimes, Nathan Haerer, Wolfgang Van Wie, Christopher Young

## Prayers for our home-bound members:

Bettye Burdett, Madge Casselman, Judy Crowell, Margaret Fite, Bobbie Fowler, Lila Glenn, Jay and Susan Graham, Teresa Hanson, Ann Scarr, Becky Speck, Leonard and Mary Jane Tibbetts, Dee Uhri, Biddie Walker

## Pray for those who do not know Christ.

If you have any congregational care needs, contact Parish Associate Jim Shroyer at 682.445.0155 or [jim@firstprestexas.org](mailto:jim@firstprestexas.org).



## Follow The Little Man

Our Prayer Ministry has been unveiling The Little Man – a 16-week visual storytelling experience along the east wall of the Fellowship Hall hallway. To deepen the experience, our weekly E-News will feature a short devotional insight – an invitation to pause, reflect, and engage with the journey in your own life. Join us as we walk alongside The Little Man, exploring the quiet courage of decision-making and the grace that meets us along the way.

## Annual Reports Due Jan. 1

It's that most wonderful time of year when our teams and groups submit their reports for the year. Team leaders and staff are asked to please send your reports to [info@firstprestexas.org](mailto:info@firstprestexas.org). Thank you!

## Church office closed through Jan. 2

Our church offices will be closed from noon on Dec. 24 through Friday, Jan. 2. We will reopen at 9 a.m. on Monday, Jan. 5.

# Staff directory:

Main Phone number: 817.274.8286

Chris Campbell	Lead Pastor	<a href="mailto:chris@firstprestexas.org">chris@firstprestexas.org</a>
Russell Farnell	Minister of Music/Facilities Admin	<a href="mailto:russell@firstprestexas.org">russell@firstprestexas.org</a>
Jim Shroyer	Parish Associate	<a href="mailto:jim@firstprestexas.org">jim@firstprestexas.org</a>
Stephanie Arredondo	Interim Director of Youth Ministry	<a href="mailto:youth@firstprestexas.org">youth@firstprestexas.org</a>
Kyle Terwilliger	Director of Children's Ministry	<a href="mailto:kyle@firstprestexas.org">kyle@firstprestexas.org</a>
Shina Heo	Organist	<a href="mailto:shina@firstprestexas.org">shina@firstprestexas.org</a>
Cheryl Harris	Music Ministry Associate	<a href="mailto:cheryl@firstprestexas.org">cheryl@firstprestexas.org</a>
Tricia Regalado	Director of Communications	<a href="mailto:tricia@firstprestexas.org">tricia@firstprestexas.org</a>
Jeanne Chin	Finance Manager	<a href="mailto:jeanne@firstprestexas.org">jeanne@firstprestexas.org</a>
Jane Leathem	Finance Assistant	<a href="mailto:jane@firstprestexas.org">jane@firstprestexas.org</a>
Bob Watkins	Prayer Ministry	<a href="mailto:bob@firstprestexas.org">bob@firstprestexas.org</a>
Diane Chin	Night Monitor	<a href="mailto:diane@firstprestexas.org">diane@firstprestexas.org</a>
Reggie Manuel	Custodian	<a href="mailto:reggie@firstprestexas.org">reggie@firstprestexas.org</a>